



Mouse Arthritis Scoring System



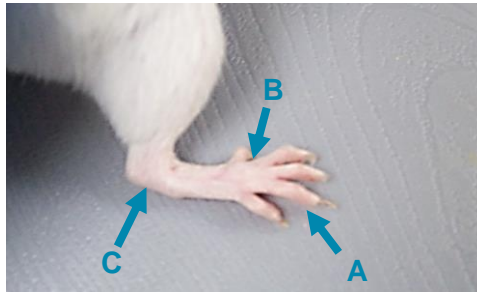
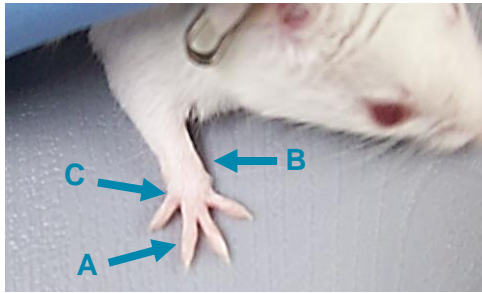
For more information about the mouse arthritis models, please contact Chondrex, Inc. at support@chondrex.com.

Observe three joint types for scoring:

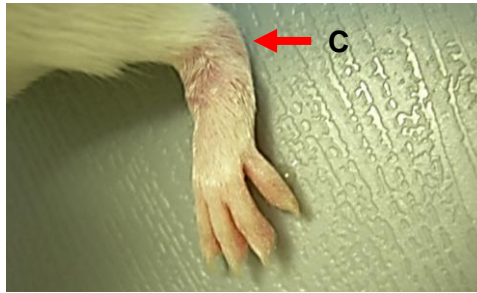
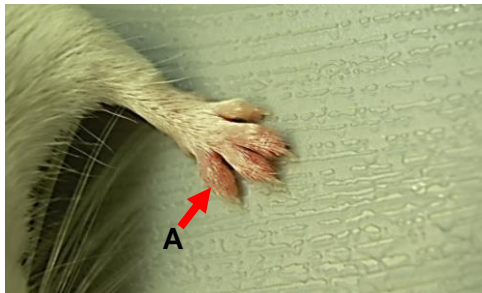
- A: Interphalangeal joint
- B: Metacarpophalangeal joint
- C: Carpal and tarsal joint

Front Paws

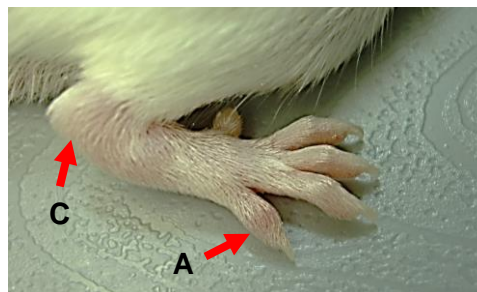
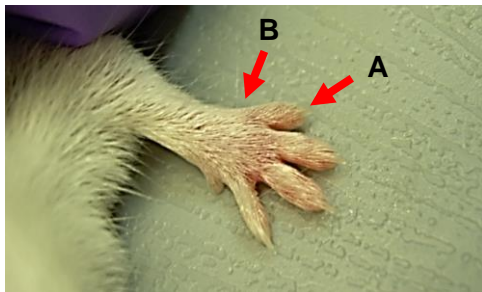
Hind Paws



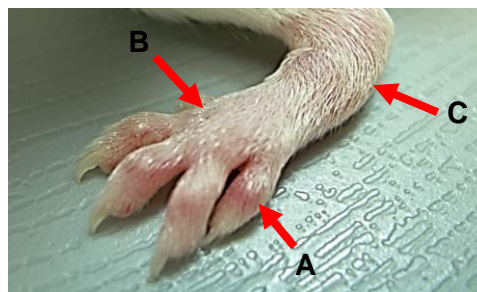
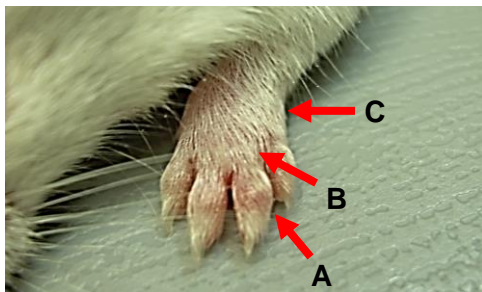
Score 0
Normal



Score 1
One joint type (A, B, or C) has redness and swelling



Score 2
Two joint types (A, B, and C) have redness and swelling



Score 3
All three joint types have redness and swelling



Score 4
Maximum redness and swelling of the entire paw leads to disappearance of anatomical definition