

Mouse Anti-Ara h3 IgE Monoclonal Antibody, Clone 2G11G7

Catalog # 7153

For Research Use Only - Not Human or Therapeutic Use

DESCRIPTION:	Mouse Anti-Ara h3 from crude peanut extract IgE Monoclonal Antibody, Clone 2G11G7, unconjugated
APPLICATION:	Use for ELISA, Western Blotting, and Cell-based Assays.
QUANTITY:	0.1 ml, 1 mg/ml
FORM:	Solution in 0.05M phosphate buffered saline, pH 7.4
SOURCE:	Mouse
REACTIVITY:	Cross-reacts to native/denatured Ara h3 under non-reducing conditions
IMMUNOGEN:	Crude Peanut Extract
PURITY:	Purified by Ion-exchange chromatography
SUBTYPE:	Mouse IgE
USAGE:	Dilute the antibody in buffer containing 1 mg/ml blocking agent, such as mouse serum albumin, to prevent loss of IgE by non-specific binding to its container at low concentrations.
STORAGE:	-20°C
STABILITY:	1 year
NOTES:	Figure 1. Western blot data of 12% SDS-gel under non-reducing conditions
REFERENCES:	N/A

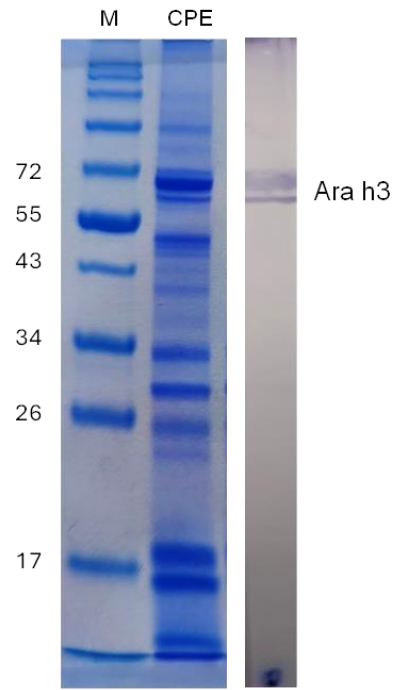


Figure 1