

## Mouse Anti-Ara h3 IgE Monoclonal Antibody, Clone 2G11G7

Catalog # 3070

*For Research Use Only - Not Human or Therapeutic Use*

DESCRIPTION:	Mouse Anti-Ara h3 IgE monoclonal antibody, Clone 2G11G7, unconjugated
APPLICATION:	Use for <i>in-vivo</i> studies and <i>in-vitro</i> studies (ELISA and Western Blotting)
QUANTITY:	3 mg
FORM:	Lyophilized powder
SOURCE:	Mouse
REACTIVITY:	Reacts to peanut allergen Ara h3
IMMUNOGEN:	Crude peanut extract
PURITY:	Purified by ion-exchange chromatography
SUBTYPE:	Mouse IgE
USAGE:	<p><i>In-vivo</i> studies: please refer to Chondrex, Inc.'s <a href="#">Mouse Anti-Crude Peanut Extract IgE Monoclonal Antibody for Inducing and Studying Allergic Diseases</a> protocol for inducing allergic reactions in mice.</p> <p><i>In-vitro</i> studies: dilute the antibody in buffer containing 2% heterologous serum, such as normal goat serum, to prevent non-specific reactions in ELISA.</p>
STORAGE:	-20°C
STABILITY:	1 year
NOTES:	Figure 1. SDS-PAGE and Western Blot data
REFERENCES:	T. Waritani, S. Lomax, D. Cutler, J. Chang, Development and evaluation of mouse anti-Ara h 1 and Ara h 3 IgE monoclonal antibodies for advancing peanut allergy research. <i>MethodsX</i> <b>11</b> , 102470 (2023).

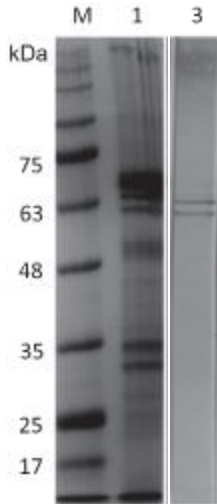


Figure 1. Western Blot analysis of peanut extract and clone 2G11G7 under non-reducing conditions

M: Molecular marker, 1: Peanut extract (CBB staining), 3: 2G11G7 (Western blot)