

Mouse Anti-dsDNA IgG Antibody ELISA Kit

Mouse Anti-ssDNA IgG Antibody ELISA Kit

Catalog # 3031 and 3041

For Research Use Only - Not Human or Therapeutic Use

PRODUCT SPECIFICATIONS

DESCRIPTION:	ELISA kits to quantify mouse IgG antibodies against single-stranded DNA (ssDNA) and double-stranded DNA (dsDNA). 3031: Mouse Anti-dsDNA IgG Antibody ELISA Kit 3041: Mouse Anti-ssDNA IgG Antibody ELISA Kit
FORMAT:	96-well ELISA plate with removeable strips
ASSAY TYPE:	Indirect ELISA
ASSAY TIME:	4.5 hours
STANDARD RANGE:	50 ng/ml to 0.8 ng/ml
NUMBER OF SAMPLES:	Up to 40 (duplicate) samples/plate
SAMPLE TYPES:	Serum & Plasma (pre-treatment acceptable)
RECOMMENDED SAMPLE DILUTIONS:	1:100 or greater
CHROMOGEN:	TMB (read at 450 nm)
STORAGE:	-20°C for 12 months
VALIDATION DATA:	3031: Intra-Assay (6.3-9.4%)/Inter-Assay (3.9-9.9%)/Spiking Test (93.4-106%) 3041: Intra-Assay (7.5-9.8%)/Inter-Assay (3.8-8.1%)/Spiking Test (94-101.4%)

Mouse Anti-dsDNA IgG Antibody ELISA Kit

Mouse Anti-ssDNA IgG Antibody ELISA Kit

Catalog # 3031 and 3041

For Research Use Only - Not Human or Therapeutic Use

INTRODUCTION

High levels of serum autoantibodies against deoxyribonucleic acid (DNA) are observed in most patients with systemic lupus erythematosus (SLE) (1, 2), therefore the presence of anti-DNA antibodies in serum is considered a valuable marker for the diagnosis of SLE. Especially considering that the serum anti-DNA antibodies form anti-DNA/DNA immune complexes which play important roles in the immunopathogenesis of renal injury also known as lupus nephritis (3). With regards to the specificity of anti-DNA antibodies, anti-single stranded DNA (ssDNA) IgG antibodies are elicited in the early stages of SLE, whereas anti-double stranded DNA (dsDNA) IgG antibody levels correlate with the severity of SLE. On the other hand, anti-dsDNA IgM antibodies are not specific to SLE, but correlate with the prognosis of lupus nephritis in patients with SLE (4, 5). Therefore, evaluating immunoglobulin levels of different isotypes against individual DNA types may indicate the stages and prognosis of SLE.

Mouse models, which provide relevant information to the human condition, elucidate the cellular and genetic requirements for inducing SLE. For example, in spontaneous murine NZB/W F1 lupus models, anti-dsDNA antibody isotype class switching from IgM to IgG indicates renal failure which is a similar trend in human SLE (6). Nonetheless, in artificial pristane-induced Balb/c lupus models, anti-ssDNA IgM antibodies solely induce SLE (7-9). In order to advance studies in these fields, Chondrex, Inc. provides mouse anti-DNA antibody ELISA kits to elucidate the diverse roles of anti-DNA antibodies in these mouse SLE models. For a complete list of available mouse anti-DNA antibody ELISA kits, please visit www.chondrex.com for more information.

KIT COMPONENTS

Item	Quantity	Amount	Storage
Standard Mouse anti-DNA IgG monoclonal Antibody (30311)	1 vial	50 ng/vial, lyophilized	-20°C
dsDNA (30312) or ssDNA (30412)	1 vial	0.5 mg/ml, 100 µl	-20°C
Secondary Antibody (Peroxidase-Conjugated Goat Anti-Mouse IgG Polyclonal Antibody) (30113)	2 vials	50 µl	-20°C
Solution A - Coating Buffer (9052)	1 bottle	10 ml	-20°C
Solution B - Blocking Buffer (30313)	1 bottle	10 ml	-20°C
Solution C - Sample/Standard/Secondary Antibody Dilution Buffer (30314)	1 bottle	50 ml	-20°C
TMB Solution (90023)	2 vials	0.2 ml	-20°C
Chromogen Dilution Buffer (90022)	1 bottle	20 ml	-20°C
Stop Solution - 2N Sulfuric Acid (9016)	1 bottle	10 ml	-20°C
Wash Buffer, 20X (9005)	1 bottle	50 ml	-20°C
ELISA Plate	1 each	96-well (8-well strips x 12)	-20°C

ASSAY OUTLINE

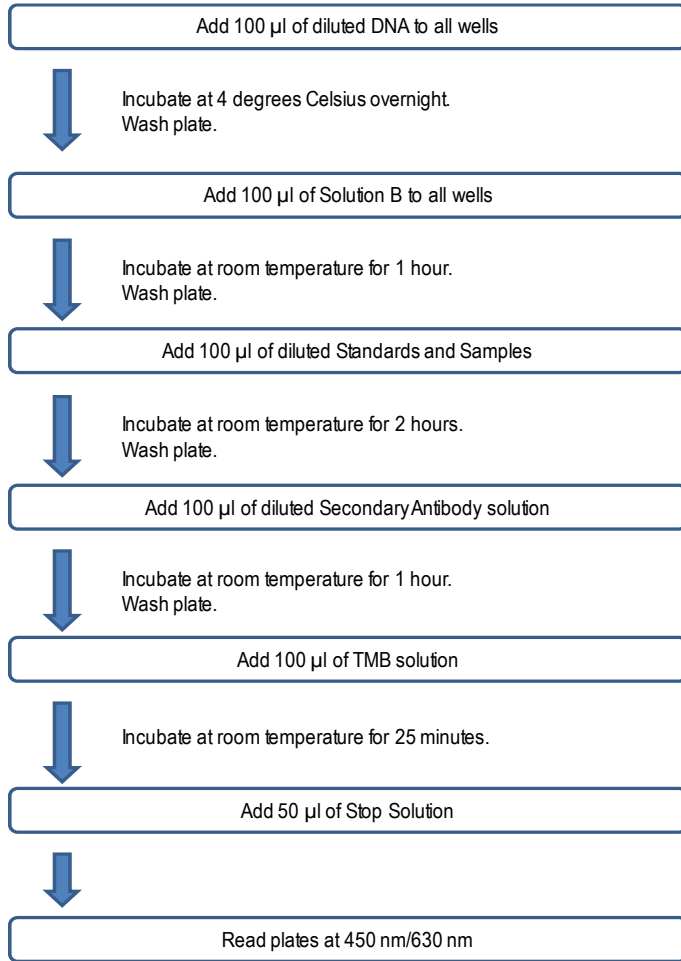
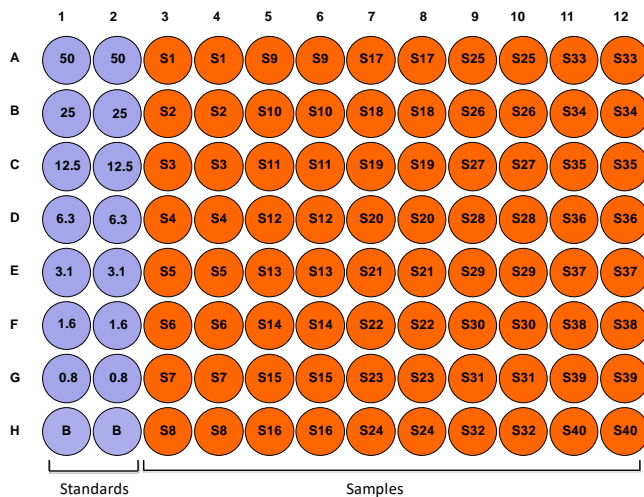


PLATE MAPPING



NOTES BEFORE USING ASSAY

NOTE 1: It is recommended that the standard and samples be run in duplicate.

NOTE 2: Warm up all buffers to room temperature before use.

NOTE 3: Crystals may form in Wash Buffer, 20X when stored at cold temperatures. If crystals have formed, warm the wash buffer by placing the bottle in warm water until crystals are completely dissolved.

NOTE 4: Measure exact volume of buffers using a serological pipet, as extra buffer is provided.

NOTE 5: Cover the plate with plastic wrap or a plate sealer after each step to prevent evaporation from the outside wells of the plate.

NOTE 6: For partial reagent use, please see the assay protocol's corresponding step for the appropriate dilution ratio. For example, if the protocol dilutes 50 μ l of a stock solution in 10 ml of buffer for 12 strips, then for 6 strips, dilute 25 μ l of the stock solution in 5 ml of buffer. Partially used stock reagents may be kept in their original vials and stored at -20°C for use in a future assay.

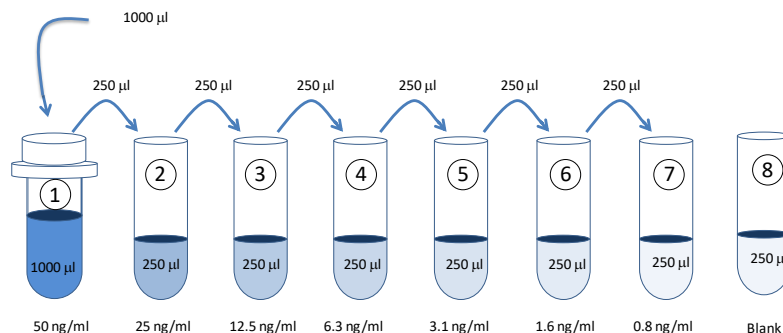
NOTE 7: This kit contains animal components from non-infectious animals and should be treated as potential biohazards in use and for disposal.

ASSAY PROCEDURE

1. **Add DNA Solution:** Dilute one vial of DNA with 10 ml of Solution A. Alternatively, dilute according to the table below. Add 100 μ l of DNA solution to each well and incubate at 4°C overnight. Any leftover DNA Stock Solution may be stored at -20°C for future assays.

Strip #	DNA (μ l)	Solution A (ml)
2	17	1.7
4	33	3.3
6	50	5.0
8	66	6.6
10	82	8.2
12	100	10.0

2. **Dilute Wash Buffer:** Dilute 50 ml of 20X wash buffer in 950 ml of distilled water (1X wash buffer). Wash the plate with 1X wash buffer at least 3 times using a wash bottle with manifold or an automated plate washer. Empty the plate by inverting it and blotting on a paper towel to remove excess liquid. *Do not allow the plate to dry out.*
3. **Add Blocking Buffer:** Add 100 μ l of the Blocking Buffer (Solution B) to each well and incubate at room temperature for 1 hour.
4. **Prepare Standard Dilutions:** The recommended standard range is 0.8-50 ng/ml. Dissolve one vial of Standard (50 ng/vial) in 1 ml of Sample/Standard/Secondary Antibody Dilution Buffer (Solution C) and keep it as a standard stock. Then serially dilute it with Solution C. For example, mix 250 μ l of the 50 ng/ml solution with an equal volume of Solution C to make a 25 ng/ml solution, and then repeat it five more times for 12.5, 6.3, 3.1, 1.6, and 0.8 ng/ml standard solutions.



5. **Prepare Sample Dilutions:** Mouse serum dilution varies (1:100 or more) depending on the animal model and timing of serum collection. In general, no IgG antibodies against DNA are observed in normal serum at a 1:100 dilution.
6. **Wash:** Wash the plate with 1X wash buffer at least 3 times using a wash bottle with manifold or an automated plate washer. Empty the plate by inverting it and blotting on a paper towel to remove excess liquid. *Do not allow the plate to dry out.*
7. **Add Standards and Samples:** Add 100 µl of standards, Solution C (blank), and samples to wells in duplicate. Incubate at room temperature for 2 hours.
8. **Wash:** Wash the plate with 1X wash buffer at least 3 times using a wash bottle with manifold or an automated plate washer. Empty the plate by inverting it and blotting on a paper towel to remove excess liquid. *Do not allow the plate to dry out.*
9. **Add Secondary Antibody:** Dilute one vial of Secondary Antibody in 10 ml Sample/Standard/Secondary Antibody Dilution Buffer (Solution C). Add 100 µl of secondary antibody solution to each well and incubate at room temperature for 1 hour.

Strip #	2 nd Antibody (µl)	Solution C (ml)
2	8	1.7
4	17	3.3
6	25	5.0
8	33	6.6
10	42	8.2
12	50	10.0

10. **Wash:** Wash the plate with 1X wash buffer at least 3 times using a wash bottle with manifold or an automated plate washer. Empty the plate by inverting it and blotting on a paper towel to remove excess liquid. *Do not allow the plate to dry out.*
11. **Add TMB Solution:** Use new tubes when preparing TMB solution. Just prior to use, prepare TMB solution with Chromogen Dilution Buffer as shown in the following table. Add 100 µl of TMB solution to each well immediately after washing the plate and incubate for 25 minutes at room temperature

Strip #	TMB (µl)	Chromogen Dilution Buffer (ml)
2	34	1.7
4	66	3.3
6	100	5.0
8	132	6.6
10	164	8.2
12	200	10.0

12. **Stop:** Stop the reaction with 50 μ l of 2N Sulfuric Acid (Stop Solution) to each well.
13. **Read Plate:** Read the OD values at 450 nm. If the OD values of samples are greater than the OD values of the highest standard, re-assay the samples at a higher dilution. A 630 nm filter can be used as a reference.

CALCULATING RESULTS

1. Average the duplicate OD values for the standards, blanks (B), and test samples.
2. Subtract the averaged blank OD values from the averaged OD values of the standards and test samples.
3. Plot the OD values of the standards against the ng/ml of antibody standard. Using a log/log plot will linearize the data. Figures 1a and 1b show examples of standard curves for anti-DNA IgG antibodies.
4. The ng/ml of antibody in test samples can be calculated using regression analysis. Multiply it by the sample dilution factor to obtain the antibody concentration (ng/ml) in the original test samples.

Figure 1a - A Typical Standard Curve for the Anti-dsDNA IgG Antibody ELISA Kit

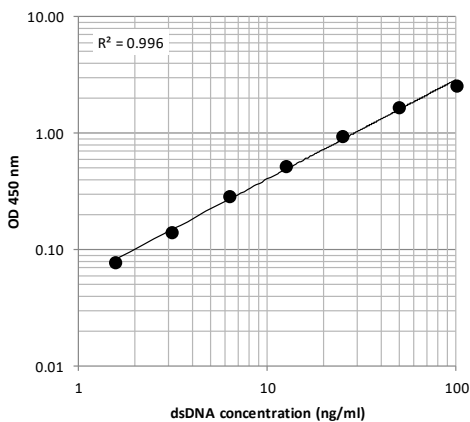
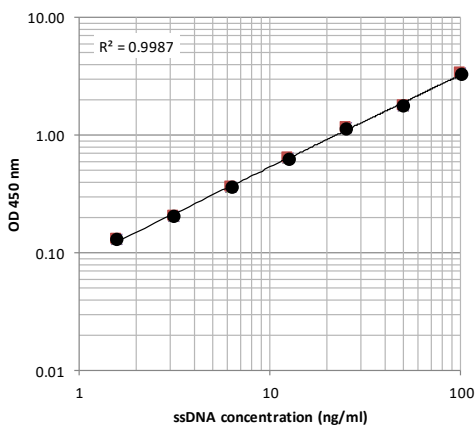


Figure 1b - A Typical Standard Curve for the Anti-ssDNA IgG Antibody ELISA Kit



VALIDATION DATA

Table 1 - Reproducibility Data for the Mouse Anti-dsDNA IgG Antibody ELISA Kit

Test	1.6 ng/ml	6.3 ng/ml	25 ng/ml
Intra-Assay CV (%)	9.4	8.6	6.3
Inter-Assay CV (%)	9.9	9.5	3.9
Spike Test* (%)	104.0 %	106.0 %	93.4 %

Table 2 - - Reproducibility Data for the Mouse Anti-ssDNA IgG Antibody ELISA Kit

Test	1.6 ng/ml	6.3 ng/ml	25 ng/ml
Intra-Assay CV (%)	9.8	9.5	7.5
Inter-Assay CV (%)	3.8	4.2	8.1
Spike Test* (%)	101.4 %	97.6 %	94.0 %

* Standard was added to known amounts of anti-dsDNA or anti-ssDNA antibodies and then diluted with Sample/Standard/Secondary Antibody Dilution Buffer to assay anti-dsDNA or anti-ssDNA IgG antibodies by ELISA.

TROUBLESHOOTING

For frequently asked questions about assays and ELISAs, please see Chondrex, Inc.'s [ELISA FAQ](#) for more information.

REFERENCES

1. D. Koffler, V. Agnello, R. Winchester, H. G. Kunkel, The occurrence of single-stranded DNA in the serum of patients with systemic lupus erythematosus and other diseases. *J Clin Invest* **52**, 198-204 (1973).
2. H. Sarvas, M. Gripenberg, M. Leirisalo-Repo, Anti-DNA antibodies: the choice of assays for routine diagnostic work. *Acta Pathol Microbiol Immunol Scand C* **93**, 13-18 (1985).
3. D. Adu, J. Dobson, D. G. Williams, DNA-anti-DNA circulating complexes in the nephritis of systemic lupus erythematosus. *Clin Exp Immunol* **43**, 605-614 (1981).
4. H. Krippner, S. Merle, K. Jörgens, K. Pirlet, Antibodies to dsDNA and ssDNA in the immunoglobulin classes IgG and IgM: prognostic value in the course of SLE. *Z Rheumatol* **43**, 265-271 (1984).
5. M. Okamura *et al.*, Significance of enzyme linked immunosorbent assay (ELISA) for antibodies to double stranded and single stranded DNA in patients with lupus nephritis: correlation with severity of renal histology. *Ann Rheum Dis* **52**, 14-20 (1993).
6. N. Talal, Disordered immunologic regulation and autoimmunity. *Birth Defects Orig Artic Ser* **14**, 197-207 (1978).
7. D. Perry, A. Sang, Y. Yin, Y. Y. Zheng, L. Morel, Murine models of systemic lupus erythematosus. *J Biomed Biotechnol* **2011**, 271694 (2011).
8. D. M. Tillman, N. T. Jou, R. J. Hill, T. N. Marion, Both IgM and IgG anti-DNA antibodies are the products of clonally selective B cell stimulation in (NZB x NZW)F1 mice. *J Exp Med* **176**, 761-779 (1992).
9. M. Satoh, A. Kumar, Y. S. Kanwar, W. H. Reeves, Anti-nuclear antibody production and immune-complex glomerulonephritis in BALB/c mice treated with pristane. *Proc Natl Acad Sci U S A* **92**, 10934-10938 (1995).